

Appendix 8

Examples of Installation, Operation and Maintenance Instructional Materials, Labels, Brochures

HOW TO USE YOUR FILTER



1) Before using the new filter,

A) Fill the filter receptacle halfway with water and.
 B) Add 10 drops of chlorine bleach or 16 drops of iodine to this water.
 C) Let it sit for 30 minutes.
 D) Use this water to rinse the receptacle, clay filter, lid and faucet and your hands. If chlorine or iodine is not available fill the receptacle halfway with boiled water and when it cools pour this water over the lid, faucet and filter. Discard all the water.

Only chlorinated, boiled, or water treated with iodine will kill bacteria in the receptacle.



2) Place the clay filter in the plastic receptacle immediately.



3) Fill the filter several times and discard the filtered water. This will remove the taste of the clay.



4) If your river or well water is cloudy, use a piece of cloth over the filter element to prefilter the water each time. Tie a string around the cloth so that it does not fall into the filter.



5) Your filter will flow faster when it is full, so fill it often.

Prefiltering will help your filter to flow faster.

HOW TO CLEAN YOUR FILTER AND RECEPTACLE



1) FILTER CLEANING
 You do not need to clean your filter more than once a month unless it starts to filter too slowly.

When this happens, carefully remove the filter. Leave the receptacle at least half full of filtered water. Place the filter on a cloth that has been washed in chlorinated or boiled water.

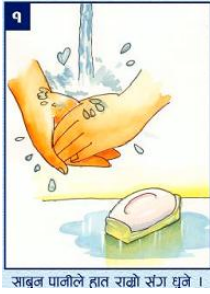


2) Using water from the receptacle, fill the filter half way and scrub it vigorously with a brush to unclog the pores. Discard the dirty water. You will have some small particles of clay come off if you are scrubbing hard enough.

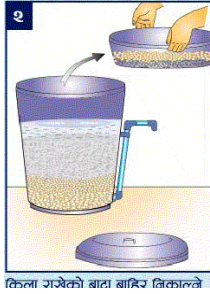


3) CLEANING THE RECEPTACLE
 The filter receptacle should be cleaned each month. Follow the directions above beginning with "1-A" for cleaning your receptacle.

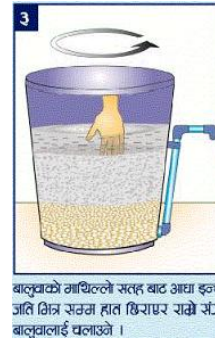
The clay filter will usually last a year before it becomes too clogged to provide enough water. At this time it should be replaced. If cleaning still restores the flow, it does not need to be replaced. To replace your filter contact _____.



1. Wash your hands with soap



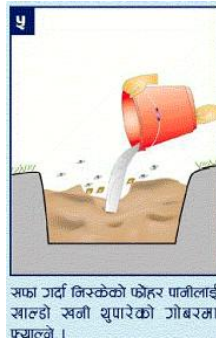
2. Remove diffuser basin



3. Stir the uppermost 1/2 inch of sand with your fingers



4a. Remove turbid water with a cup.
4b. Replace the basin and add more water.
4c. Repeat the



5. Discard the turbid water in a dug hole



6. Now the filter can be used again